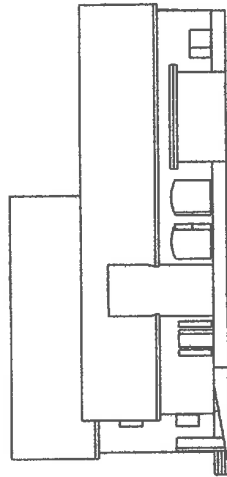
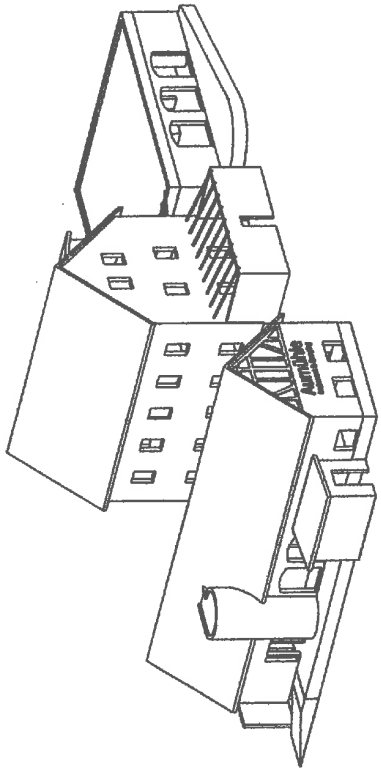
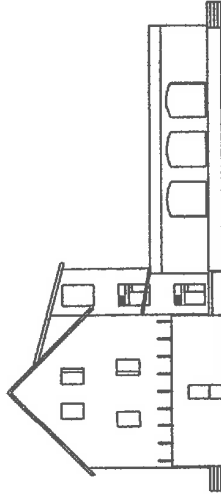
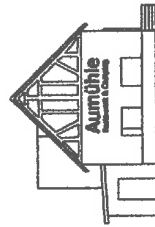


Perspektive von Ost



Süd-Ost

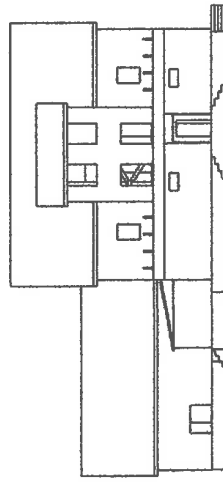
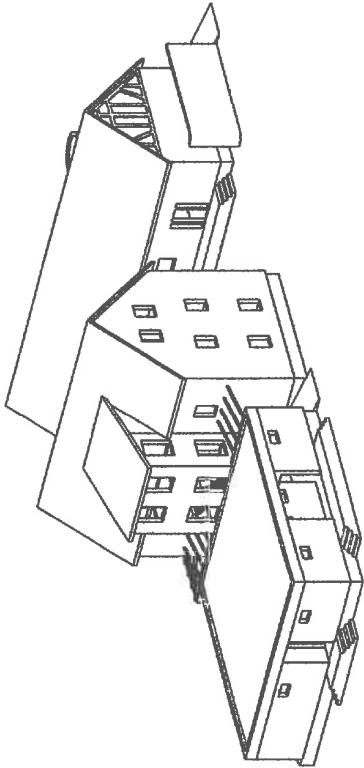


Nord-Ost

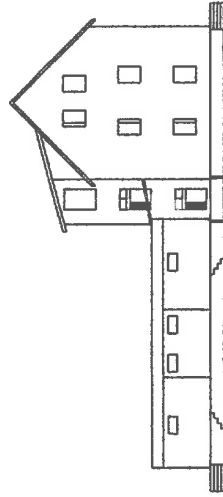
Created by: Dominik Bayer	Title: Camping Aumühle	Size: A4	Sheet: 1 von 4	Scale: 1 : 250
Supplementary information:				
Seitenansichten von Osten				
				Date: 11.01.2021
				Revision:



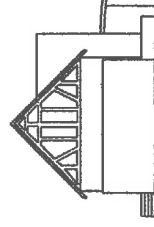
Perspektive von West




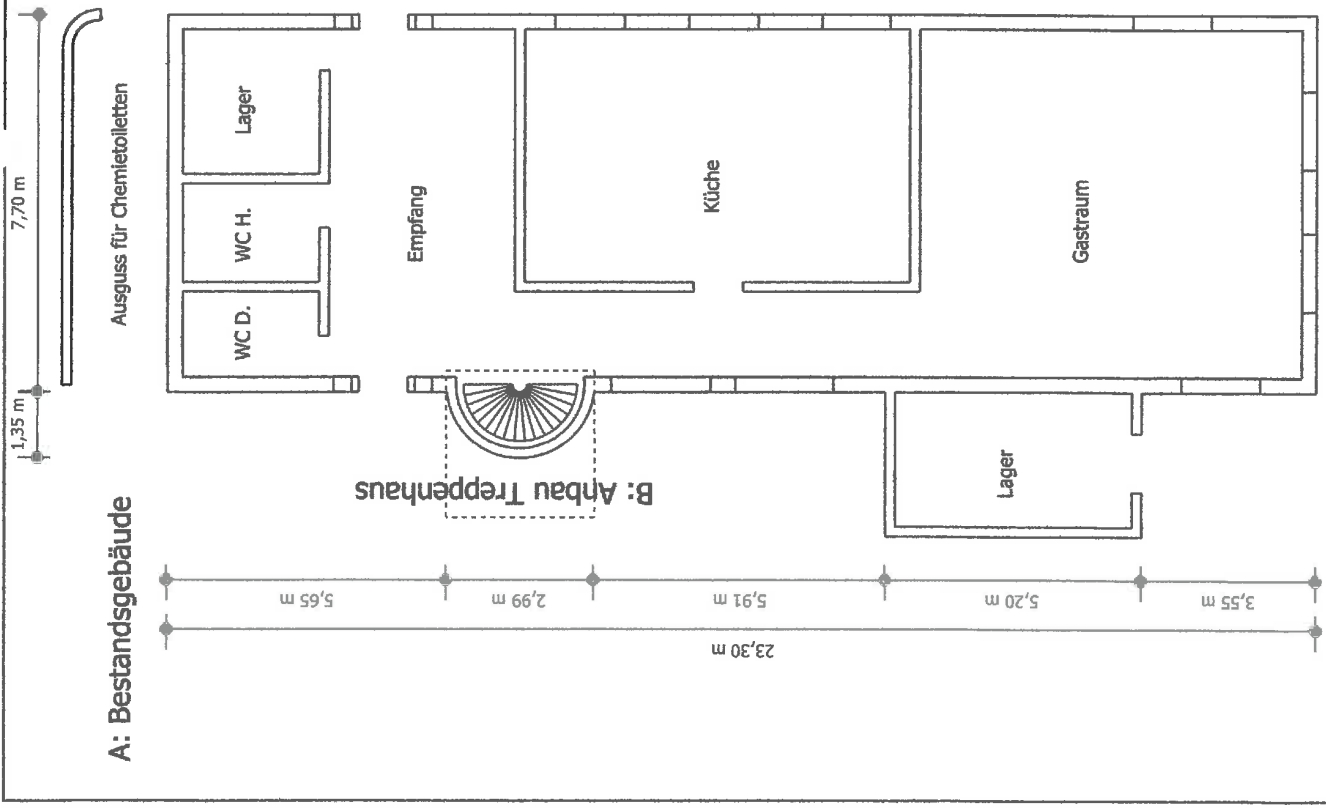
Nord-West



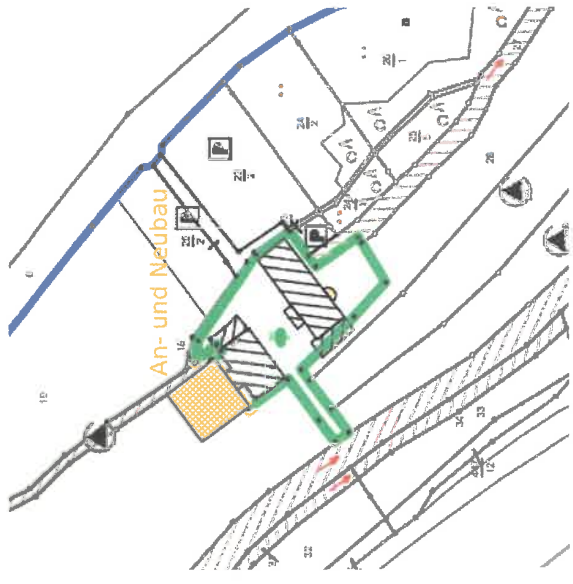
Süd-West



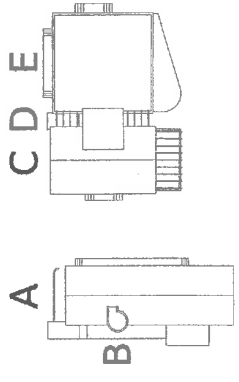
Created by: Dominik Bayer	Title: Camping Aumühle	Size: A4	Sheet: 2 von 4	Scale: 1 : 250
Supplementary information: Seitenansichten von Westen		Part number:		Drawing no.:
		Date: 11.01.2021	Revision:	



Lageplan



Gebäudeteile von Oben



Created by:	Dominik Bayer		
Supplementary information:	Camping Aumühle		
	Size:	Sheet:	Scale:
	A4	3 von 4	
	Part number:	Drawing number:	
	Date:	11.01.2021	
	Revision:		

Grundriss Gastronomiegebäude
 A: Bestandsgebäude
 B: Anbau Treppenhaus
 Lageplan

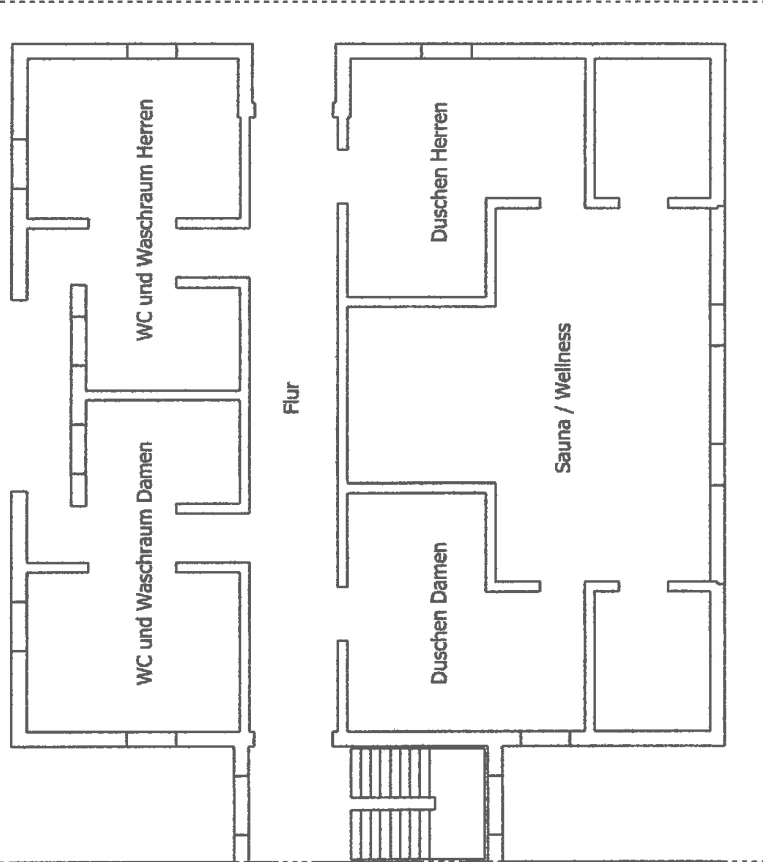
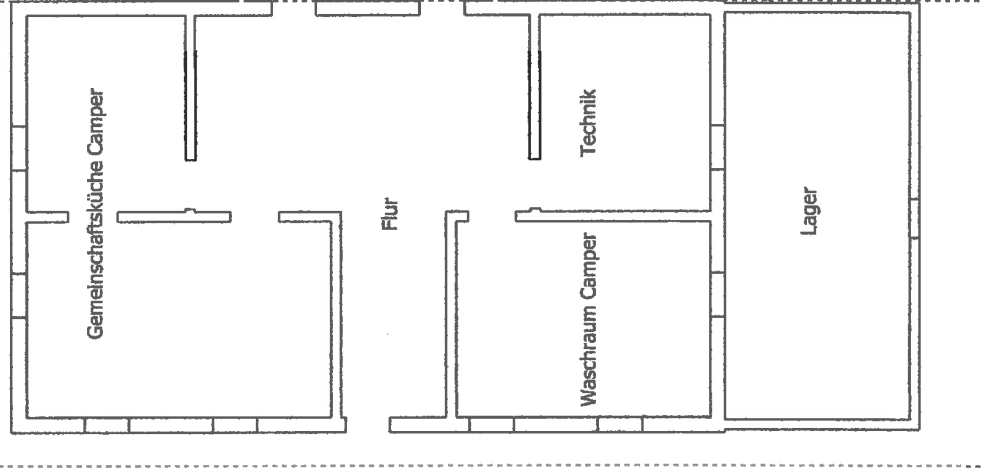
8,50 m

16,80 m

2,50 m 0,30 m 4,60 m 0,30 m 3,90 m 0,30 m 4,60 m 0,30 m

C: Bestandsgebäude

D: Anbau Treppenhaus / E: Neubau Sanitärbereich



4,67 m 5,15 m 4,67 m 14,48 m

Created by: **Dominik Bayer**

Title: **Camping Aumühle**

Supplementary information:

Grundriss Hauptgebäude
C: Bestandsgebäude
D: Anbau Treppenhaus
E: Neubau Sanitärbereich

Size: **A4**

Sheet: **4 von 4**

Scale:

Part number:

Drawing number:

Date: **11.01.2021**

Revision:

